

The Corporation of the Village of South River

By-law 35-2022

Being a by-law to adopt a tree canopy and natural vegetation policy for the Village of South River.

WHEREAS Section 270 (1) (7) of the Municipal Act, 2001, S.O. 2001, c.25 requires a municipality to adopt a plan which describes how to protect and enhance the tree canopy and natural vegetation.

NOW THEREFORE the Council of the Village of South River hereby enacts the following policy:

1. Tree Canopy and Natural Vegetation policy as attached in Schedule A to define and explain, in Municipal context, guiding principles for tree canopy and vegetation in the Village of South River

This by-law comes into force upon adoption by the Council of the Village of South River.

READ A FIRST AND SECOND TIME THIS 25th DAY OF JULY 2022.

READ A THIRD TIME AND FINALLY PASSED THIS 25th DAY OF JULY 2022.

Mayor, Jim Coleman

Clerk Administrator, Don McArthur

TREE CANOPY AND NATURAL VEGETATION POLICY

PURPOSE:

Section 270 (1) (7) of the Municipal Act, 2001, S.O. 2001, c. 25 requires a municipality to adopt a plan which describes how to protect and enhance the tree canopy and natural vegetation.

The purpose is to offer a summary understanding of local vegetation, planting considerations and promote best practices. Good forestry practice is encouraged through the cleaning and thinning of trees for the purposes of stimulating tree growth and improving the quality of the woodlot without permanently breaking the canopy.

SCOPE:

This policy applies to all properties and development, on public and private lands, in the Village of South River. It is a resource which can be referred to and utilized as guiding principles for residential, commercial and public purposes.

Applications for subdivisions, Official Plan and Zoning By-law amendments, minor variances or site plan control may be supported by a Tree Preservation Plan.

What is an Urban Tree Canopy?

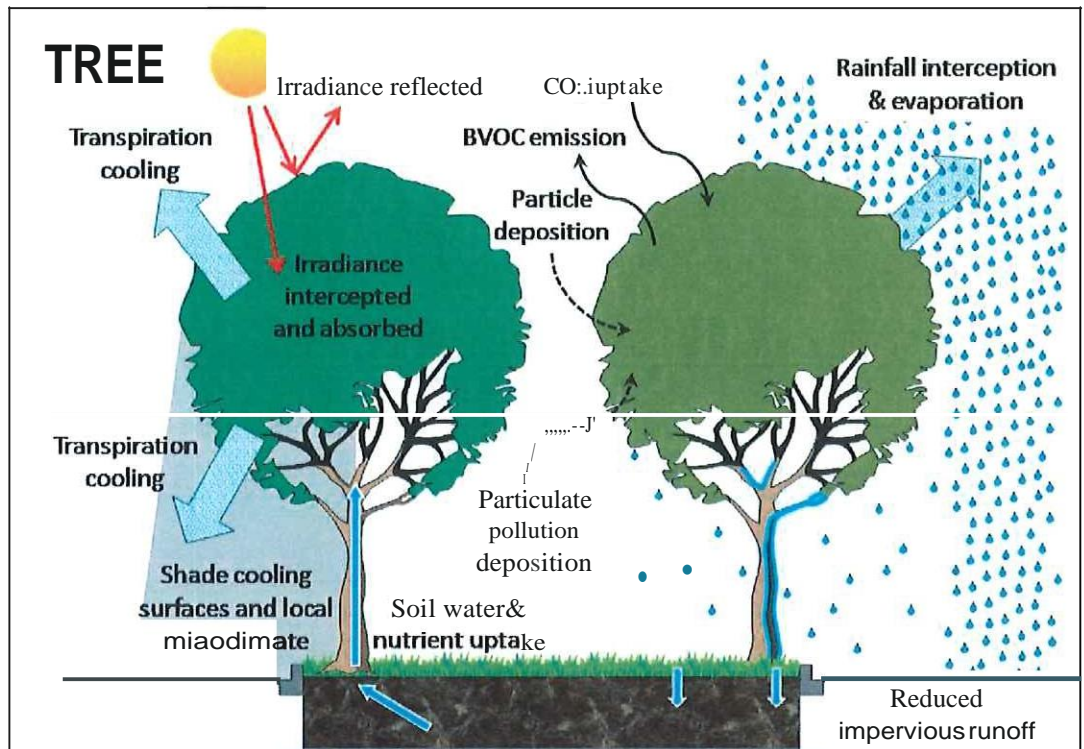
According to the Center of Watershed Protection, an urban tree canopy is the layer of leaves, branches and stems that cover the ground when viewed from above. Essentially, it is the same

For this reason, the importance of an urban tree canopy and the use of native vegetation is very important.

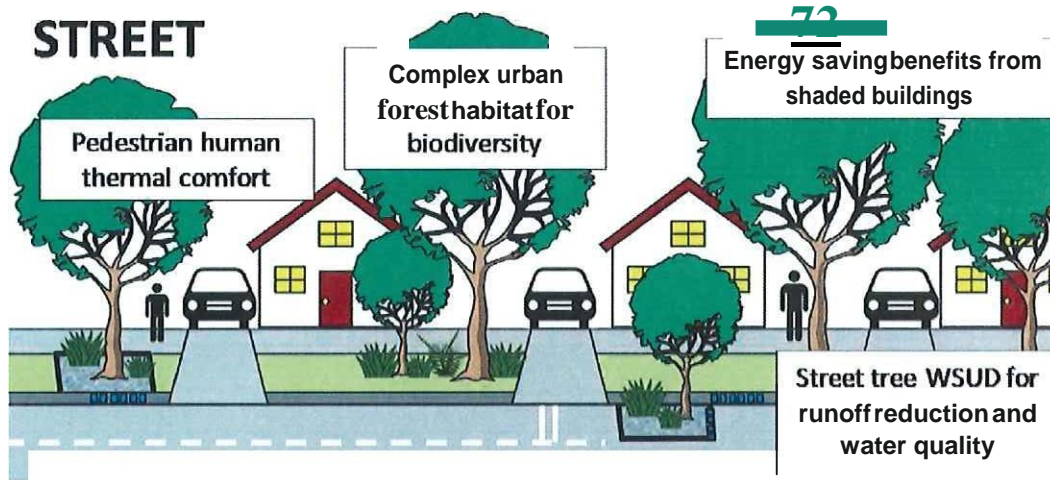
BENEFITS:

There are several benefits to an urban tree canopy, including:

- A mature urban tree canopy creates shade, which lowers energy consumption for a community. This is accomplished via the direct link of shading households, and a community wide impact of reducing the urban heat island effect;
- Reduces air pollution;
- Increases property value;
- Provide shelter for wildlife;
- Improves the usability of public parks;
- Improves the aesthetics of properties and street lines;
- Assists in stormwater management; and
- Prevents erosion, especially along slopes.



BVOC= Biological volatile organic compounds



WSUD = Water Sensitive Urban Design

POLICY DETAILS:

Native Plantings

When planting any vegetation, local species/native vegetation should be utilized. Some examples of are included in Schedule "B"

Where to Plant

Consideration should be given to where trees and vegetation are planted. Prior to planting a tree, property lines, utilities (power lines, buried water/sewer laterals or other 'hard' infrastructure) should be considered. The location of a tree should take into context its future size as it relates to a building's foundation and roof.

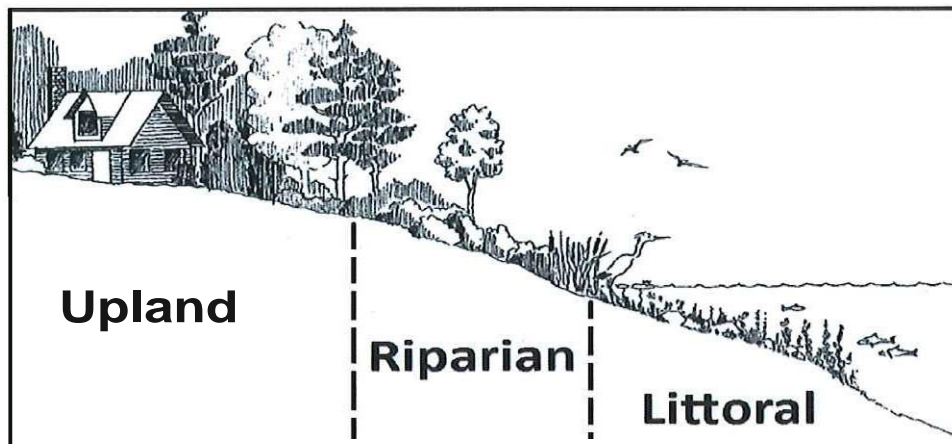
Shoreline Vegetation

Vegetated areas adjacent to watercourses, lakes, rivers, and wetlands are known as shoreline buffers. Shoreline buffers protect water from pollutants by filtering contaminants, providing habitat for native species and preventing shoreline erosion.

Shoreline buffers should be:

- At least 15-30 metres upland from the shore as recommended by the Ministry of Natural Resources and Forestry;
- Composed of natural vegetation with a broad corridor of undisturbed vegetation;
- Not be grassed
- Avoid shoreline hardening.

The types of vegetation by zone are illustrated below.



Courtesy of the Muskoka Watershed Council 2013

This Plan supports the retention or restoration of the natural vegetative buffer adjacent to all watercourses as the means of protecting water resources and its related ecological function from the negative impacts of development. The Plan also recognizes that woodlands and forests have great ecological significance. Property owners may benefit from the Managed Forest Tax Incentive Program which is a voluntary program that provides lower property taxes to participating landowners who agree to conserve and actively manage their forests.

Forests are a renewable resource if harvested in a sustainable manner. Forestry management is sustainable when it maintains and enhances the long-term health of forest ecosystems to the benefit of all living things, while providing environmental, economic, social and cultural opportunities for the benefit of present and future generations. Sustainable forest management refers to management regimes applied to forest lands which maintain the productive and renewal capacities as well as the genetic, species and ecological diversity of forest ecosystems.

Maintenance and Preservation

Trees and Vegetation require special care and treatment. If it appears the vegetation is struggling, it is recommended you speak to a professional.

Commercial/Higher Density Uses

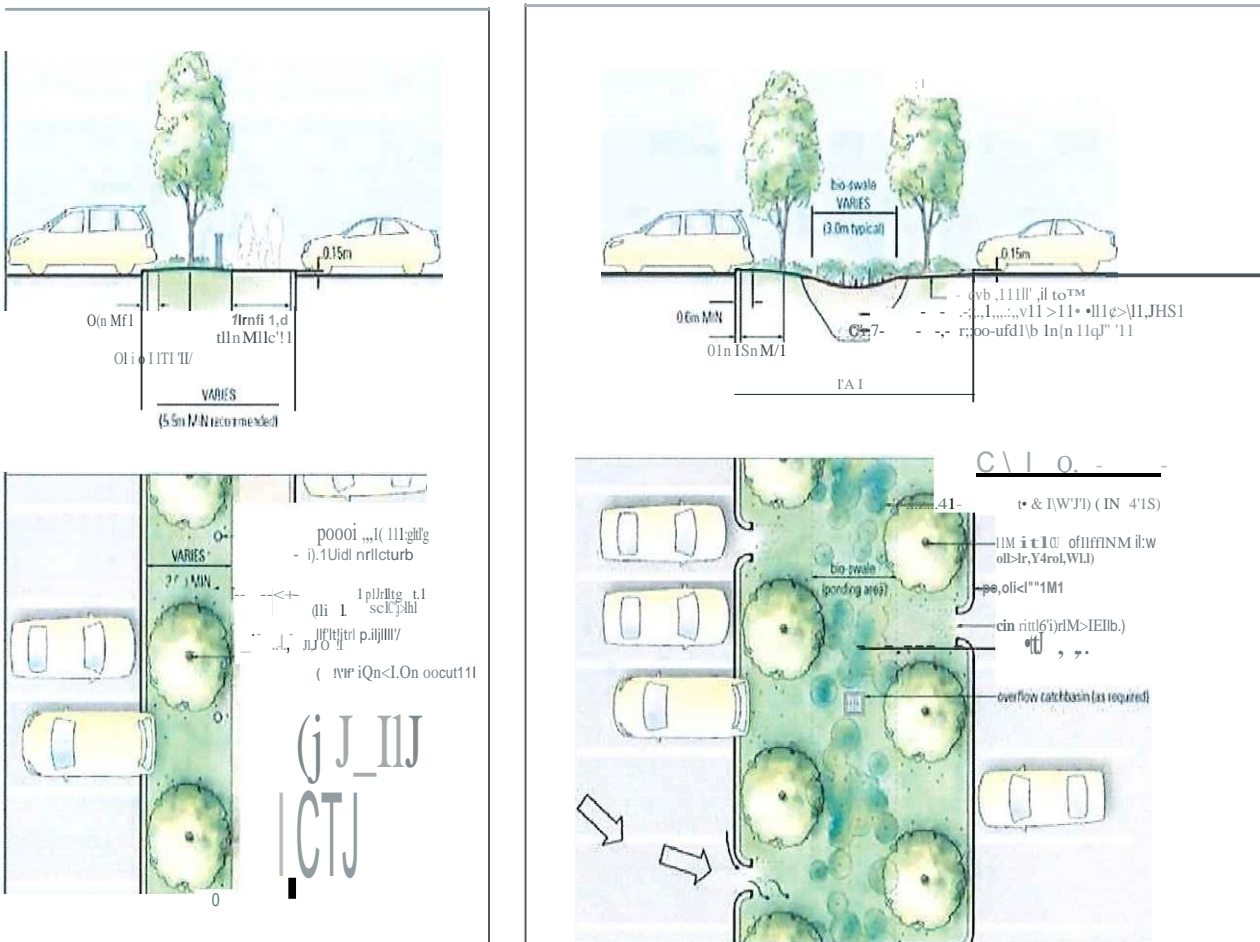
In addition to this policy applying to single detached homes and smaller residential uses, it can also provide guidance to larger commercial/multiple residential developments.

In addition to the benefits listed previously, increased vegetative buffers help beautify commercial properties and match the natural beauty of the Village of South River.

Other benefits that can be considered:

- Green parking lots to reduce stormwater flows and the costs of stormwater maintenance
- Vegetated aisles and parking islands to increase shaded areas and reduce micro climates.
- Green roofs to reduce total stormwater runoff and enhance the urban canopy.

Illustrations from the City of Toronto Design Guidelines for "Greening" Surface Parking lots are included below.



Disclaimer

This policy does not take priority over any By-Laws, Resolutions or Agreements of the Village of South River.

Schedule 'B' to By-law No. xx-2022

Trees	Shrubs	Partial Shade	Full Sun	Shoreline
Riparian Zone Balsam Fir red Maple Tamarack Blue Spruce White Spruce Colorado Spruce Red/White Pine Eastern Hemlock Medium Sized Chokecherry Pin Cherry Serviceberry Striped/Hard Maple Ironwood Eastern White Cedar Large Size Bur Oak Red Oak Silver Maple Trembling Aspen White Birch Red Spruce Eastern White Pine Butternut Sugar Maple	Black Chokeberry Nannyberry Northern Bush Honeysuckle Pagoda Dogwood Red Osier Dogwood Smooth Wild Rosa Swamp Rose Sweet Gala Winterberry Holly Common Elderberry Highbush Cranberry Lowbush Blueberry Meadowsweet Serviceberry Steeplebush	Bearberry Bloodroot Bunchberry False Solomons Seal Jack-in-the-Pulpit Wild Columbine Foamflower Ostrich Fern	Black-eyed Susan Big Bluestem Grass Canada Goldenrod Common Milkweed Flat-topped Aster New England Aster Pearly Everlasting	Blue Flag Iris Blue Vervain Boneset Cardinal Flower Swamp Milkweed Joe Pye Weed White Tur